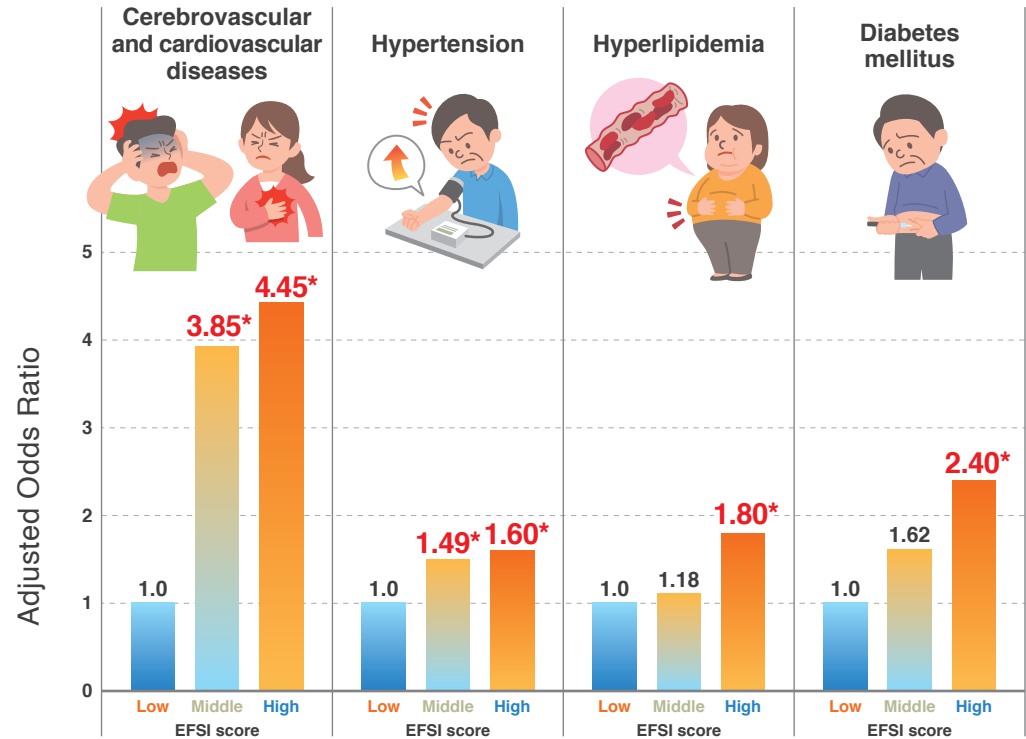


# Excessive Fatigue Symptoms Inventory (EFSI)

Investigation reports  
for worker's compensation claim



We used data on Karoshi prodromes listed in investigation reports for worker's compensation claims to develop a new questionnaire for evaluating symptoms of excessive fatigue. Those prodromes were classified into 26 excessive fatigue symptoms.



Excessive Fatigue Symptom Inventory score (26–104)  
 - Low; less than 27  
 - Middle; 27–30  
 - High; greater than 30

Covariates; age, gender, alcohol, smoking, exercise, overtime, night shift, working hours, sleep duration, waiting time on-site, work schedule, and job tenure

Shorter sleep duration is associated with potential risks for overwork-related death among Japanese truck drivers : use of the Karoshi prodromes from worker's compensation cases

Tomohide Kubo T., Matsumoto S., Sasaki T., Ikeda H., Izawa S., Takahashi M., Koda S., Sasaki T., Sakai K. 2021 / International Archives of Occupational and Environmental Health volume 94, pages991–1001 / DOI: 10.1007/s00420-021-01655-5

